

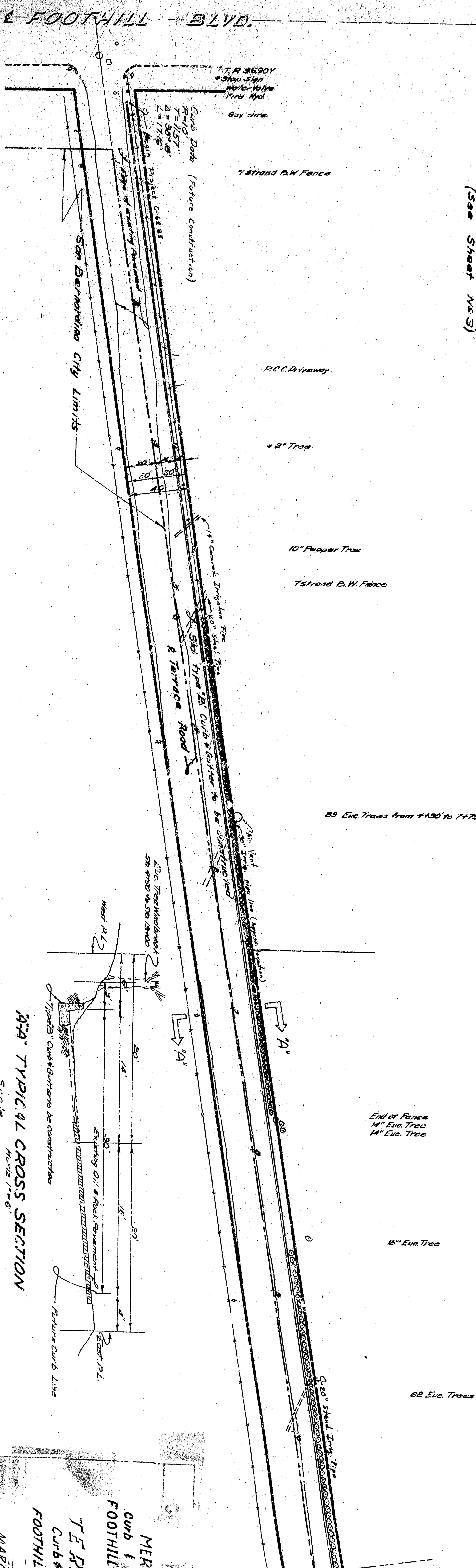
GENERAL NOTES:
(See Sheet No 5)

TERRACE

PLAN
SCALE 1" = 40'

ROAD

Not Constructed



30' TYPICAL CROSS SECTION
Scale
1" = 6'

MERIDIAN AVENUE
 CURB & GUTTER, WEST SIDE
 FOOTHILL BLVD. TO FIFTH STREET
 TERRACE ROAD
 CURB & GUTTER, WEST SIDE
 FOOTHILL BLVD. to ETIMANVILLE

MARCH 1959
 RONALD E. LITTLE